

# CODESYS V2 (Symbolic Addressing)

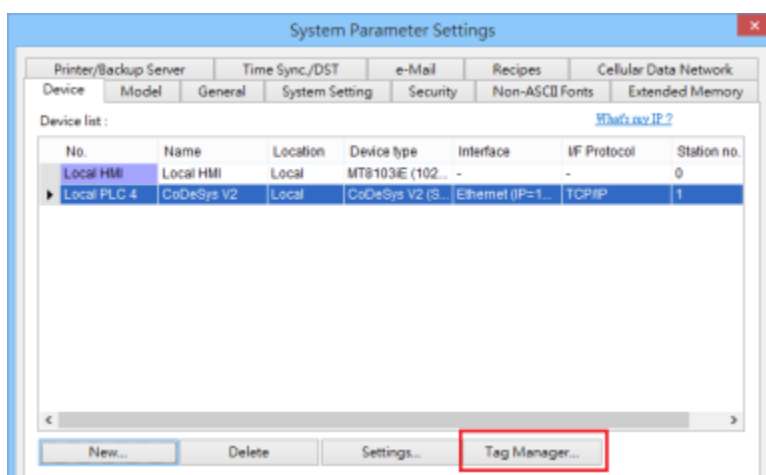
Supported Series: CODESYS V2

## HMI Setting:

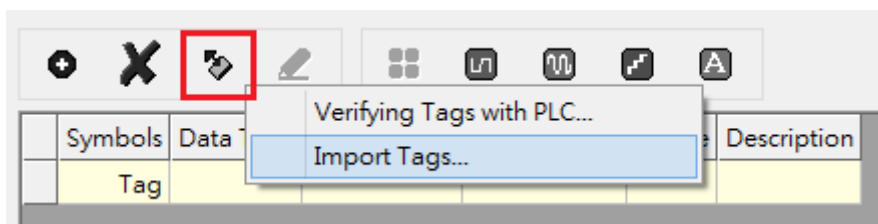
Parameters	Recommended	Options	Notes
<b>PLC type</b>	CODESYS V2 (Symbolic Addressing)		
<b>PLC I/F</b>	RS232		
<b>Baud rate</b>	38400		
<b>Data bits</b>	8		
<b>Parity</b>	None		
<b>Stop bits</b>	1		

## How to Import Tags:

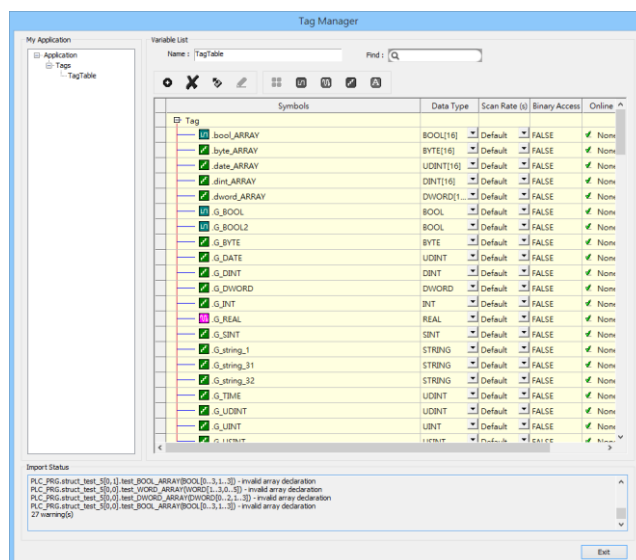
1. Click **[New]** to add **[CODESYS V2 (Symbolic Addressing)]** driver, and then click **[Tag Manager]**.



1. Select **[Get Tags]** » **[Import Tags]**, and then select the Tag **(.SYM\_XML)** to be imported.



- The successfully imported tags will be listed in a table. If any unsupported data type exists, a warning message will show in **[Import Status]** field.



### Note1: Generate \*.SYM\_XML

- [Project]** -> **[Options]** -> **[Symbol configuration]** , select **[Dump symbol entries]** and **[Dump XML symbol table]**.
- Open **[Configure symbol file]**, select **[Export data entries]**

**Note2:** EBPro V6.03.02 or later supports 64 bits data type (**cMT Series only**), but please note that the address limit range is 48 bits in maximum.

## Wiring Diagram:

### RS-232 (CM1-SC02A: RS-232 9P D-Sub)

The serial port pin assignments may vary between HMI models, please click the following link for more information.

